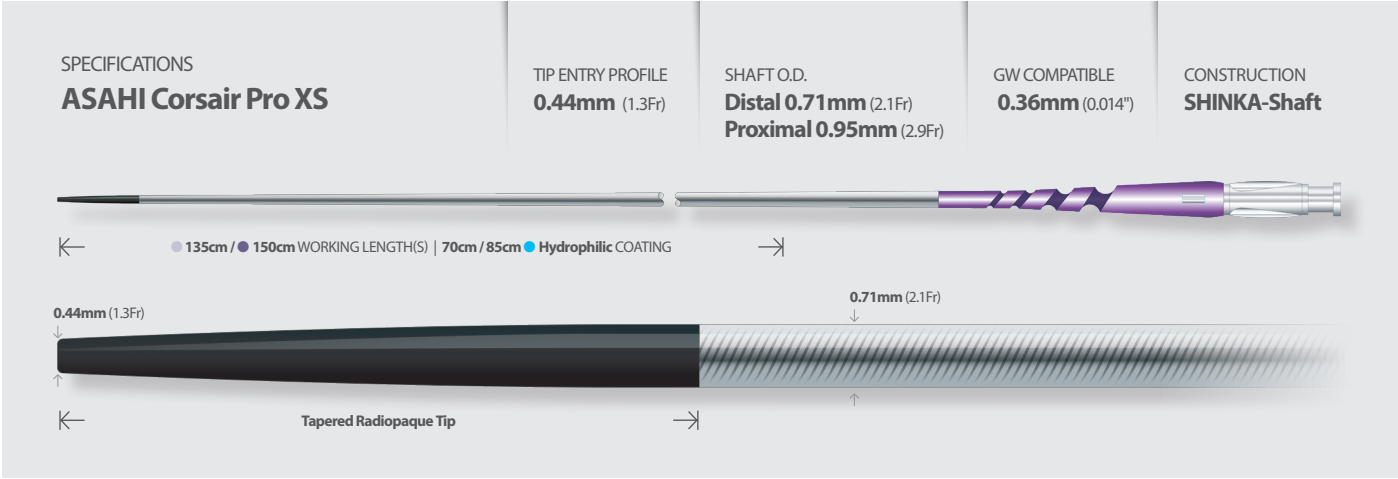


ASAHI Corsair Pro XS

Simplify Retrograde Complexity

The new SHINKA-Shaft increases device performance by maintaining flexibility and durability



Catalogue No.	Outer Diameter			Inner Diameter		Usable Length	Recommended GW
	Tip	Distal Shaft	Proximal Shaft	Tip	Shaft		
CSR135-21S	0.44mm (1.3Fr)	0.71mm (2.1Fr)	0.95mm (2.9Fr)	0.38mm (0.015 inch)	0.48mm (0.019 inch)	135cm	0.36mm (0.014 inch)
CSR150-21S	0.44mm (1.3Fr)	0.71mm (2.1Fr)	0.95mm (2.9Fr)	0.38mm (0.015 inch)	0.48mm (0.019 inch)	150cm	0.36mm (0.014 inch)



© 2020 ASAHI INTECC CO., LTD
"ASAHI" and "Corsair Pro" are trademarks or registered trademarks of ASAHI INTECC CO., LTD. in Japan and other countries.

Manufactured by:



ASAHI INTECC CO.,LTD.

3-100 Akatsuki-cho, Seto, Aichi 489-0071 Japan
TEL:+81-561-48-5551 FAX:+81-561-48-5552
www.asahi-intecc.com

Distributed by:

K20231_B_LC_1.0

ASAHI
Corsair Pro XS
Microcatheter



ASAHI Corsair Pro XS

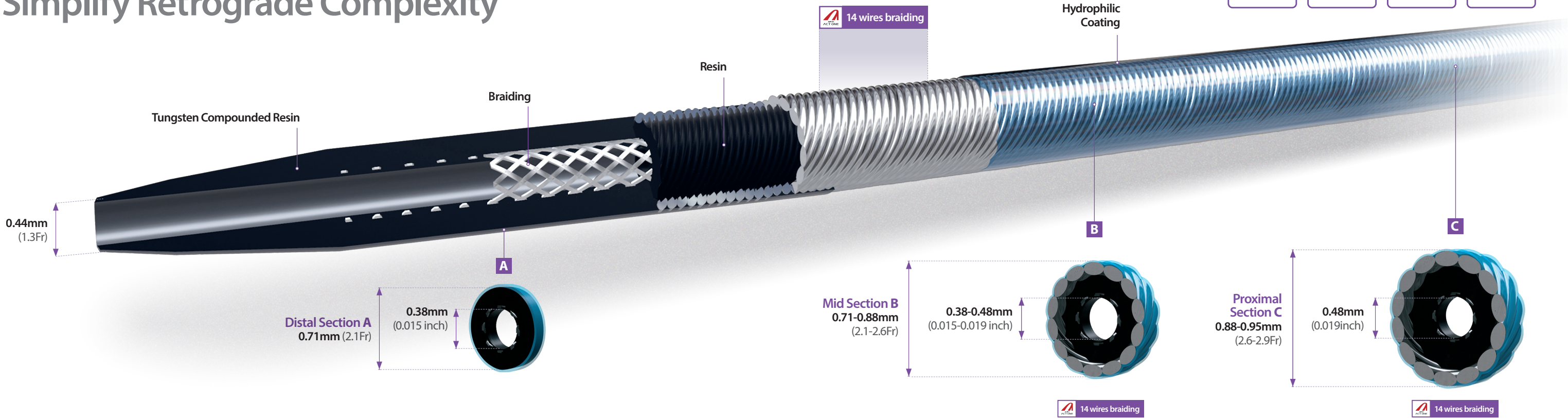
Simplify Retrograde Complexity

LOW
Tip Profile

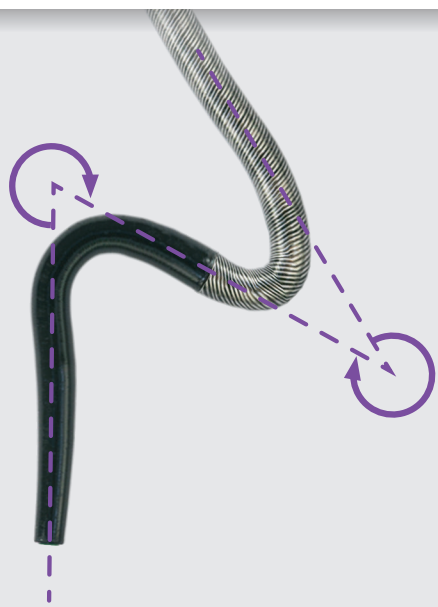
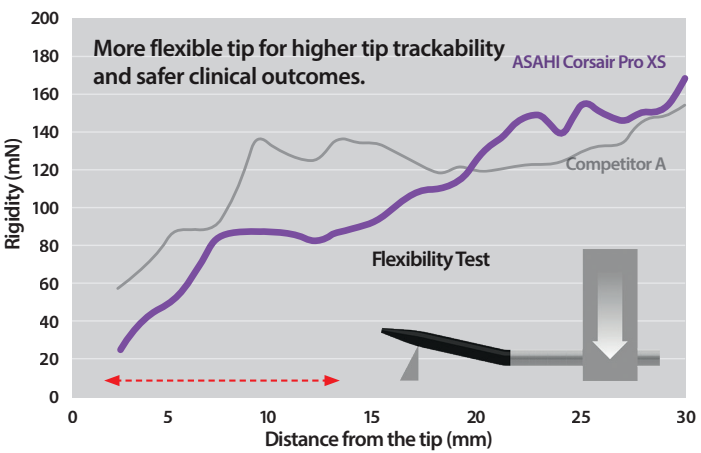
2.1 Fr
Microcatheter

10
Torqueable

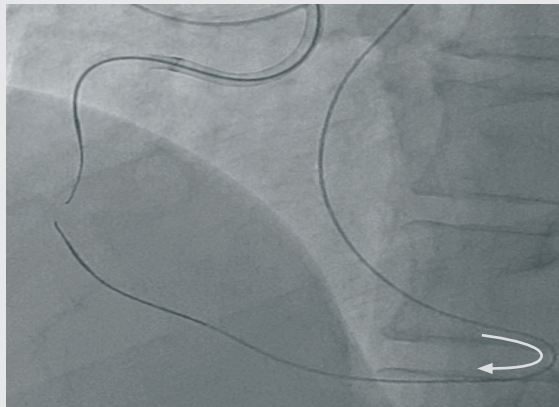
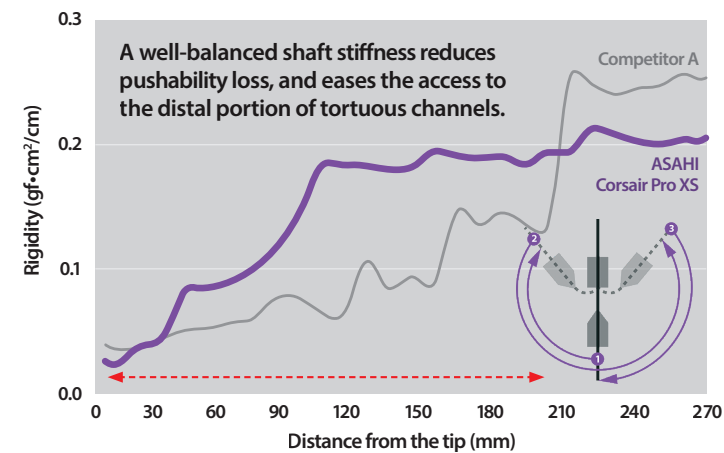
Flexible & Trackable



Tip Flexibility



Shaft Stiffness



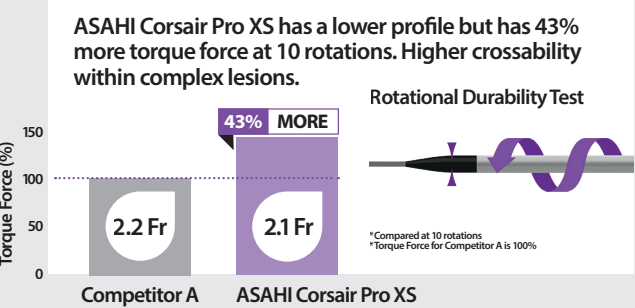
ASAHI Corsair Pro XS during retrograde procedure

Lubricity Length

Longer and more durable hydrophilic coating for improved lubricity performance.



Rotational Durability



Tip Profile

Smaller tip entry profile. Lower profile and tip portion.

